

Accumulator Charging Valve NG 6 ISO 4401



Design and Function

Accumulator charging valves are piloted piston valves. The valve controls the hydraulic accumulator charging process, for systems with fixed displacement pumps.

After the accumulator has been charged and system pressure is reached, the valve then switches the pump flow into bypass mode (P to T). When the pressure falls because functions are demanding flow, the valve will sense the difference and will close the bypass to allow the accumulator to recharge. Pressure differences available include: 5%, 10%, 15% and 20%.

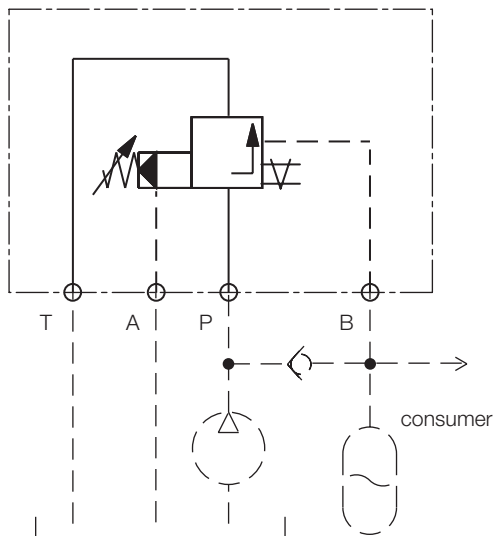
Advantages

- optimised power economy and reduced heat emission from the hydraulic system
- energy saving due to low bypass pressure
- fixed switching hysteresis, simple start up procedure
- soft and exact switching over due to pressure pre-relieve
- robust und reliable through simple design

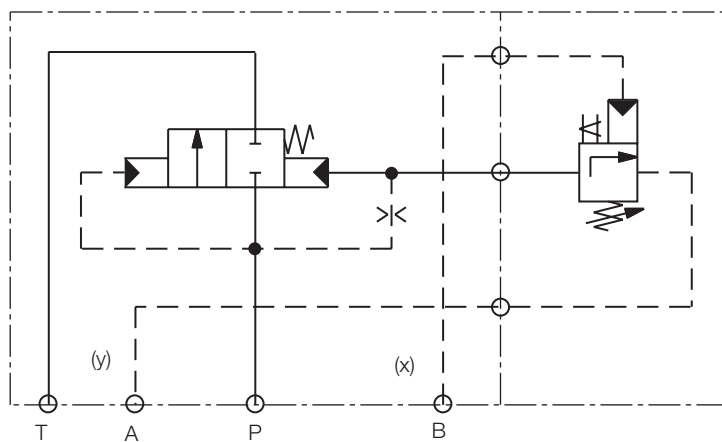
Options

- electrical discharge (data sheet 344)
- complete accumulator charging units (data sheet 711)
- accumulator charging valve kit (Data sheet 343)

Symbol



Symbol, detailed



Technical Data

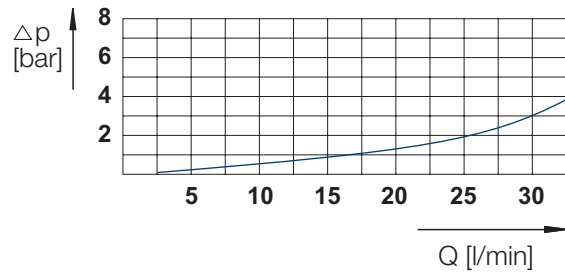
General

Symbol	please see symbol diagram
Type of valve	piloted piston valve
Operation	electric
Mounting	4 x M5 x 60 DIN912
Connection of ports	mounting plate
Mounting positions	mountable in any positions
Ambient temperature	-5 to +50 °C
Mass valve	2.0 kg
Mass mounting plate	1.0 kg

Hydraulic

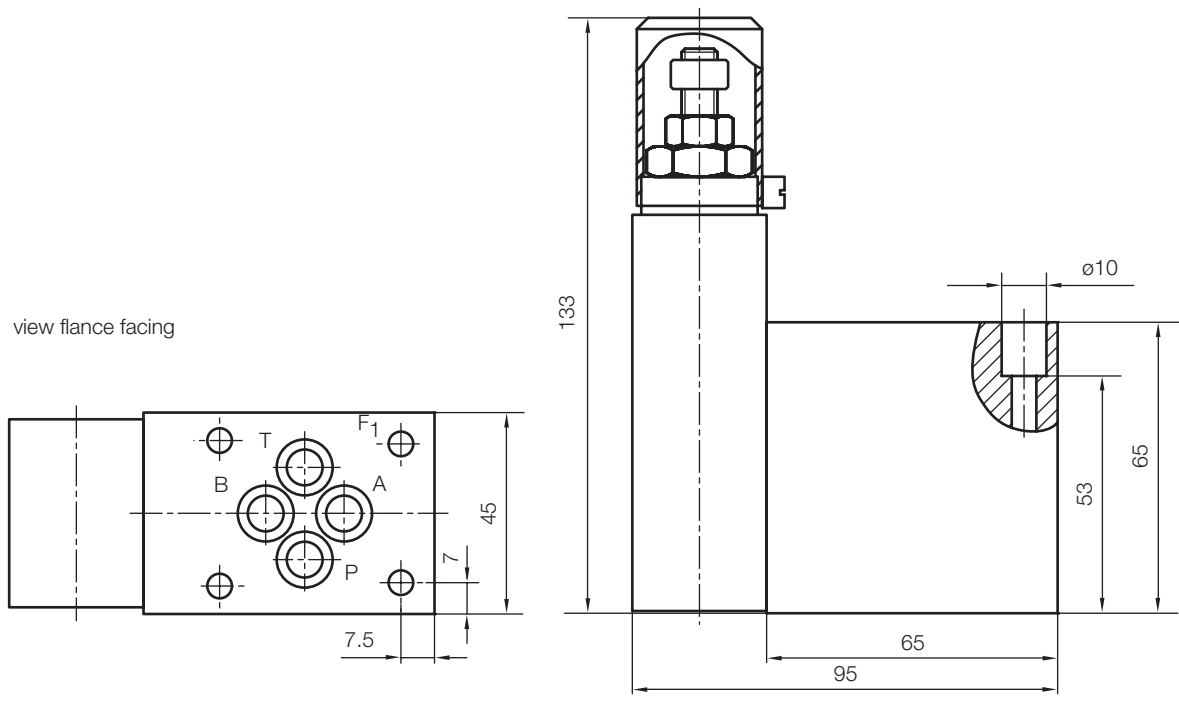
Pressure stages	20-60; 45-80; 80-120;120-175;175-250;250-315 bar
Switch hysteresis	5; 10; 15 oder 20 %
Hydraulic oil temperature	-5 to +70 °C
Viscosity range	10 to 300 mm ² /s
Max rate of flow	30 l/min

Characterstic curve



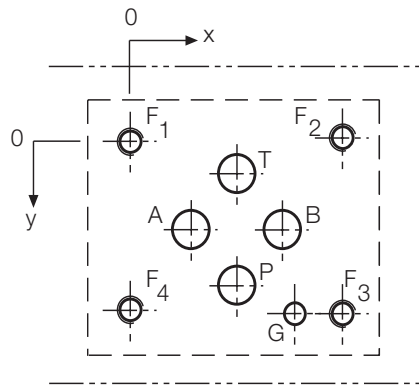
hydraulic oil 35 mm²/s, 50°C

Dimensional Drawing



all dimensions in mm

Port Connection Pattern

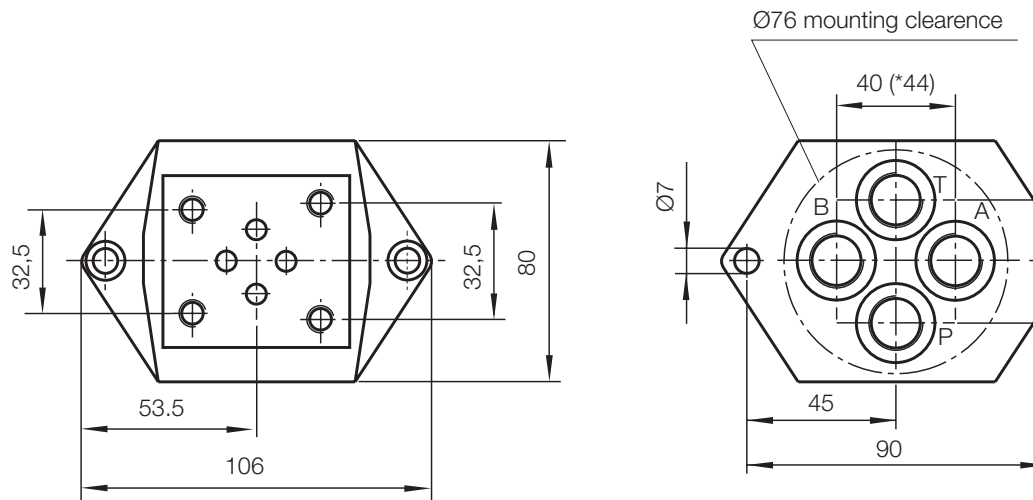


view: fastening side of mounting plate

	P	A	T	B	F1	F2	F3	F4
Ø max [mm]	11,2	11,2	11,2	11,2	M6	M6	M6	M6
x [mm]	27	16,7	3,2	37,3	0	54	54	0
y [mm]	6,3	21,4	32,5	21,4	0	0	46	46

F: M5, thread depth min. 1.5 x Ø

Single-Unit Mounting Plate



	G	S	D	E	H	M
R 3/8"			30	55	41,5	67
R 1/2"	Ø 27		26	59	37,5	71
R 3/4"	Ø 33		24	61	35,5	73

Order number single-unit mounting plate:

PW10-G3-400, pipe connections R3/8"

PW10-G4-400, pipe connections R1/2"

PW10-G5-400, pipe connection R3/4"

Multiple-unit mounting plate on request.

Type Code

Dy	55	.	1	-	6	-	120	P	-	391	K	y	
													external leakage oil return
													adjustment method S= setting screw K= cover
													design code
													design
													pressure stages 60,80,120,175,250,315 bar
													nominal size
													switching hysteresis (0 = 5%, 1 = 10%, 2 = 15%, 3 = 20%)
													symbol
													pressure valve, piloted
													material number

Voith Turbo H + L Hydraulic GmbH & Co. KG
Schuckertstraße 15
71277 Rutesheim, Germany
Tel. +49 7152 992-3
Fax +49 7152 992-400
sales-rut@voith.com

voith.com



VOITH
Engineered Reliability